

Think Remanufactured Products

Ivor Searle adds Peugeot Partner gearbox to LCV range

Six-speed gearbox is compatible with 1.2-litre petrol Partner vans manufactured from 2018 onwards

Adam Lane July 14, 2025 Comments Closed 0 likes



Ivor Searle has expanded its selection of gearboxes for light commercial vehicles (LCVs) with the addition of a manual transmission unit for the Peugeot Partner.

This six-speed gearbox is compatible with 1.2-litre petrol Partner vans manufactured from 2018 onwards, including models equipped with features such as cruise control, speed limiters, and stop/start systems.

The remanufacturer regularly updates its "all makes" programme, which includes engines, gearboxes, and turbochargers, covering over 90% of the cars and LCVs on UK roads.

For customer assurance, all Ivor Searle gearboxes come with a **12-month unlimited mileage parts and labour warranty**. The company maintains substantial stock levels to facilitate customer service and reduce vehicle downtime, offering **free next-day UK mainland delivery** for stock items ordered before 3:30 pm.

For more information, you can contact the Ivor Searle sales team on **01353 720531** or visit their website [by clicking here](#).



GSF Car Parts launches Lucas snack pack promotion to celebrate 150 years of the brand

6th July 2025

Customers who order selected Lucas products from GSF will re...

READ MORE

Most shared



Mechanic seriously injured by falling car while praying at Liverpool garage



VIDEO: Mechanic has manhood mashed in workshop mishap



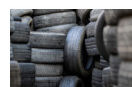
A warning to customers following TikTok mechanics



750,000 mile Mercedes pulled over on M6 due to defects



Halfords plans garage closures amidst rising costs



Preston garages fail on part-worn tyre safety, investigation reveals

liked

- Facebook
- Twitter
- LinkedIn
- Mail

Subscribe for FREE

Subscribe for free to get the latest from Garage Wire straight to your inbox